

Hardware Specification

The specific devices used in design of IEWB-RS were the following

Device	Platform	DRAM	Flash	Installed WICs / Modules
R1	2620XM	128	32	2 - WIC-1T
R2	2620XM	128	32	2 - WIC-1T
R3	3640	128	32	1 - NM-2E2W 1 - NM-4A/S
R4	3640	128	32	1 - NM-2E2W 2 - WIC-1T
R5	3640	128	32	1 - NM-2E2W 2 - WIC-1T
R6	2821	256	64	2 - WIC-1T
SW1	3560-24TS-E	Default	Default	N/A
SW2	3560-24TS-E	Default	Default	N/A
SW3	3550-24-EMI	Default	Default	N/A
SW4	3550-24-EMI	Default	Default	N/A

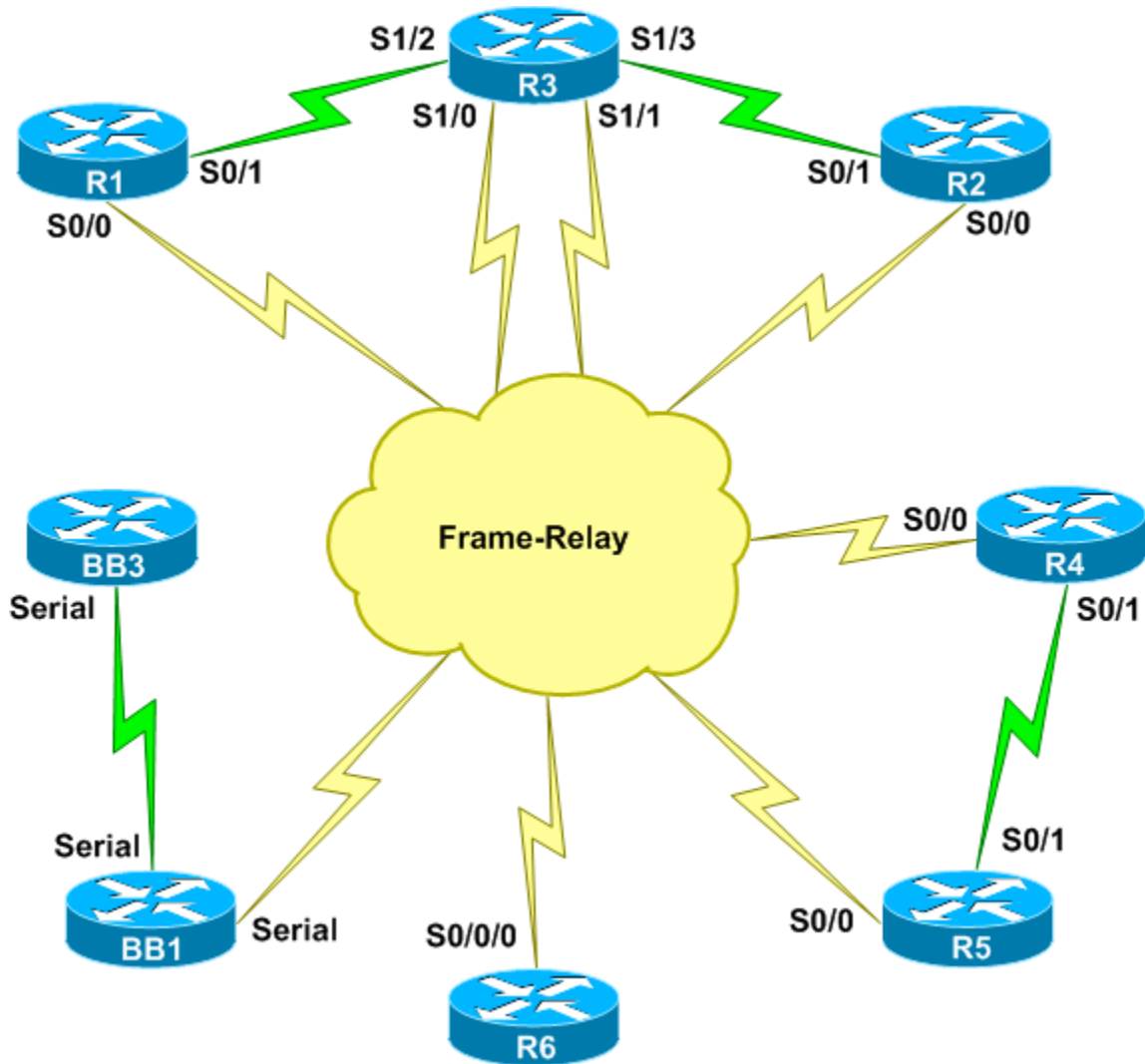
The generic devices used in IEWB-RS include the following:

Device	Software Version	Software Feature Set	Interfaces
R1	12.4(10)A	Advanced Enterprise Services	1 - FastEthernet 2 - Serial
R2	12.4(10)A	Advanced Enterprise Services	1 - FastEthernet 2 - Serial
R3	12.4(10)A	Enterprise/FW/IDS Plus IPSec 3DES	2 - Ethernet 4 - Serial
R4	12.4(10)A	Enterprise/FW/IDS Plus IPSec 3DES	2 - Ethernet 2 - Serial
R5	12.4(10)A	Enterprise/FW/IDS Plus IPSec 3DES	2 - Ethernet 2 - Serial
R6	12.4(10)A	Advanced Enterprise Services	2 - GigabitEthernet 1 - Serial
SW1	12.2(25)SEE2	EMI	24 - FastEthernet 2 - GigabitEthernet
SW2	12.2(25)SEE2	EMI	24 - FastEthernet 2 - GigabitEthernet
SW3	12.2(25)SEC2	EMI	24 - FastEthernet 2 - GigabitEthernet
SW4	12.2(25)SEC2	EMI	24 - FastEthernet 2 - GigabitEthernet

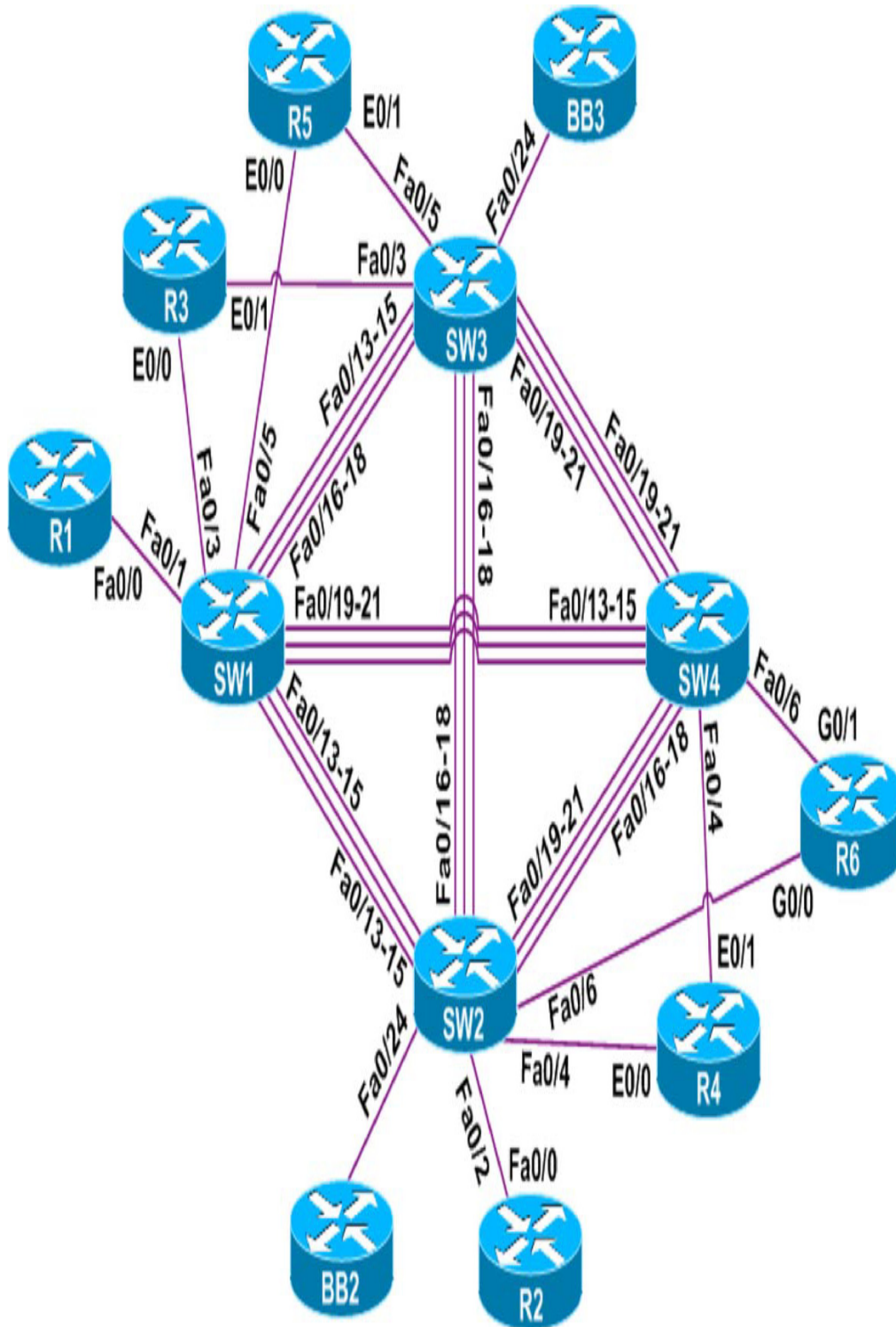
The external core devices used in IEWB-RS include the following

Device	Software Version	Software Feature Set	Interfaces
BB1*	12.2(15)T17	IP Plus	1 - Ethernet
BB2	12.2(15)T17	IP Plus	1 - Ethernet
BB3*	12.2(15)T17	IP Plus	1 - Ethernet
Frame Relay Switch	N/A	N/A	8 - Serial
* BB1 and BB3 will need to peer via iBGP with each other			

IEWB-RS Physical WAN Cabling



IEWB-RS Physical LAN Cabling



IEWB-RS Physical Interface Connections

Frame Relay Switch Configuration					
Local Router	Local Interface	Local DLCI	Remote Router	Remote Interface	Remote DLCI
R1	S0/0	102	R2	S0/0	201
R1	S0/0	103	R3	S1/0	301
R1	S0/0	113	R3	S1/1	311
R1	S0/0	104	R4	S0/0	401
R1	S0/0	105	R5	S0/0	501
R2	S0/0	202	R1	S0/0	102
R2	S0/0	203	R3	S1/0	302
R2	S0/0	213	R3	S1/1	312
R2	S0/0	204	R4	S0/0	402
R2	S0/0	205	R5	S0/0	502
R3	S1/0	301	R1	S0/0	103
R3	S1/0	302	R2	S0/0	203
R3	S1/0	304	R4	S0/0	403
R3	S1/0	305	R5	S0/0	503
R3	S1/1	311	R1	S0/0	113
R3	S1/1	312	R2	S0/0	213
R3	S1/1	314	R4	S0/0	413
R3	S1/1	315	R5	S0/0	513
R4	S0/0	401	R1	S0/0	104
R4	S0/0	402	R2	S0/0	204
R4	S0/0	403	R3	S1/0	304
R4	S0/0	413	R3	S1/1	314
R4	S0/0	405	R5	S0/0	504
R5	S0/0	501	R1	S0/0	105
R5	S0/0	502	R2	S0/0	205
R5	S0/0	503	R3	S1/0	305
R5	S0/0	513	R3	S1/1	315
R5	S0/0	504	R4	S0/0	405
R6	S0/0/0	51	BB1	S0	51
R6	S0/0/0	100	BB1	S0	100
R6	S0/0/0	101	BB1	S0	101
R6	S0/0/0	201	BB1	S0	201
R6	S0/0/0	301	BB1	S0	301
R6	S0/0/0	401	BB1	S0	401

Ethernet Connections			
Local Device	Local Interface	Remote Device	Remote Interface
R1	Fa0/0	SW1	Fa0/1
R2	Fa0/0	SW2	Fa0/2
R3	E0/0	SW1	Fa0/3
R3	E0/1	SW3	Fa0/3
R4	E0/0	SW2	Fa0/4
R4	E0/1	SW4	Fa0/4
R5	E0/0	SW1	Fa0/5
R5	E0/1	SW3	Fa0/5
R6	G0/0	SW2	Fa0/6
R6	G0/1	SW4	Fa0/6
SW1	Fa0/1	R1	Fa0/0
SW1	Fa0/3	R3	E0/0
SW1	Fa0/5	R5	E0/0
SW2	Fa0/2	R2	Fa0/0
SW2	Fa0/4	R4	E0/0
SW2	Fa0/6	R6	G0/0
SW2	Fa0/24	BB2	N/A
SW3	Fa0/3	R3	E0/1
SW3	Fa0/5	R5	E0/1
SW3	Fa0/24	BB3	N/A
SW4	Fa0/4	R4	E0/1
SW4	Fa0/6	R6	G0/1

Switch to Switch Connections			
Local Switch	Local Interface	Remote Switch	Remote Interface
SW1	Fa0/13	SW2	Fa0/13
SW1	Fa0/14	SW2	Fa0/14
SW1	Fa0/15	SW2	Fa0/15
SW1	Fa0/16	SW3	Fa0/13
SW1	Fa0/17	SW3	Fa0/14
SW1	Fa0/18	SW3	Fa0/15
SW1	Fa0/19	SW4	Fa0/13
SW1	Fa0/20	SW4	Fa0/14
SW1	Fa0/21	SW4	Fa0/15
Local Switch	Local Interface	Remote Switch	Remote Interface
SW2	Fa0/13	SW1	Fa0/13
SW2	Fa0/14	SW1	Fa0/14
SW2	Fa0/15	SW1	Fa0/15
SW2	Fa0/16	SW3	Fa0/16
SW2	Fa0/17	SW3	Fa0/17
SW2	Fa0/18	SW3	Fa0/18
SW2	Fa0/19	SW4	Fa0/16
SW2	Fa0/20	SW4	Fa0/17
SW2	Fa0/21	SW4	Fa0/18
Local Switch	Local Interface	Remote Switch	Remote Interface
SW3	Fa0/13	SW1	Fa0/16
SW3	Fa0/14	SW1	Fa0/17
SW3	Fa0/15	SW1	Fa0/18
SW3	Fa0/16	SW2	Fa0/16
SW3	Fa0/17	SW2	Fa0/17
SW3	Fa0/18	SW2	Fa0/18
SW3	Fa0/19	SW4	Fa0/19
SW3	Fa0/20	SW4	Fa0/20
SW3	Fa0/21	SW4	Fa0/21
Local Switch	Local Interface	Remote Switch	Remote Interface
SW4	Fa0/13	SW1	Fa0/19
SW4	Fa0/14	SW1	Fa0/20
SW4	Fa0/15	SW1	Fa0/21
SW4	Fa0/16	SW2	Fa0/19
SW4	Fa0/17	SW2	Fa0/20
SW4	Fa0/18	SW2	Fa0/21
SW4	Fa0/19	SW3	Fa0/19
SW4	Fa0/20	SW3	Fa0/20
SW4	Fa0/21	SW3	Fa0/21